

2009

## Impressions of Biorock<sup>®</sup> Technology - selected examples

*"A vision without action is just a dream.  
Action without vision is just a waste of time.  
A vision with action is able to change the world!"  
Nelson Mandela*



Photographed and compiled by  
Ari Spenhoff  
03.01.2009



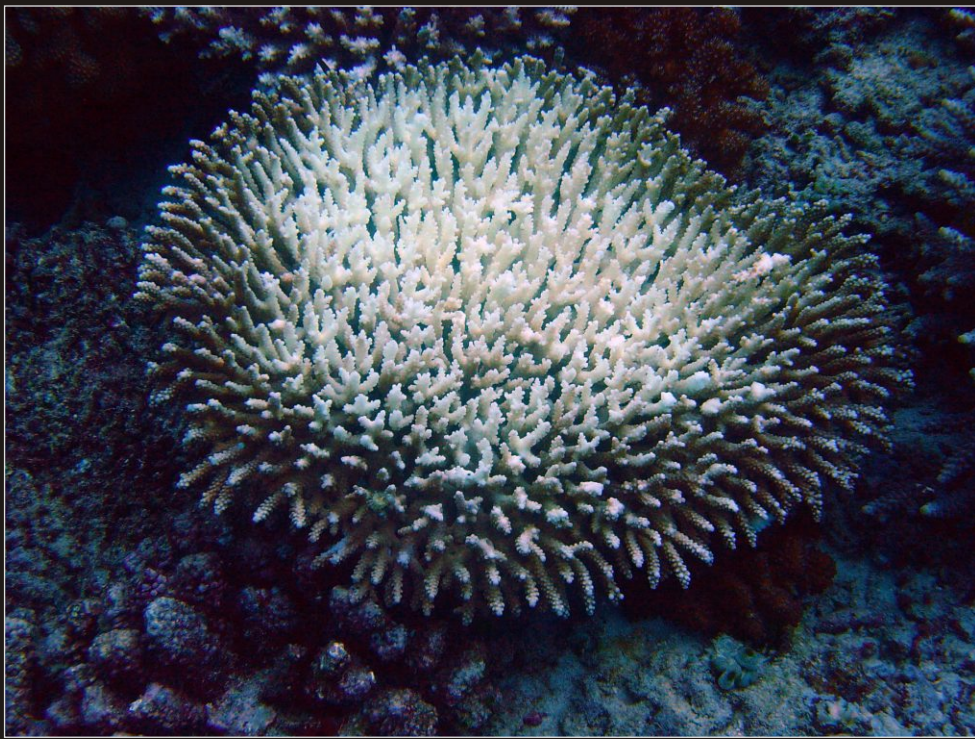


Fig.01

“Coral reefs face many threats. Some are natural stresses, such as hurricanes or plagues of coral-eating predators - about which we can do little. Really healthy reefs will recover from them over time. In a completely different category are the human caused stresses to reefs. These stresses are persistent and constantly intensifying. Coral reefs cannot recover from such ever-present, worsening stresses. The end result of this human-impacted stress is that reefs now have trouble recovering from natural stresses which they otherwise would be able to bounce back from.”

*Dr. Thomas Goreau, Dec. 2008*

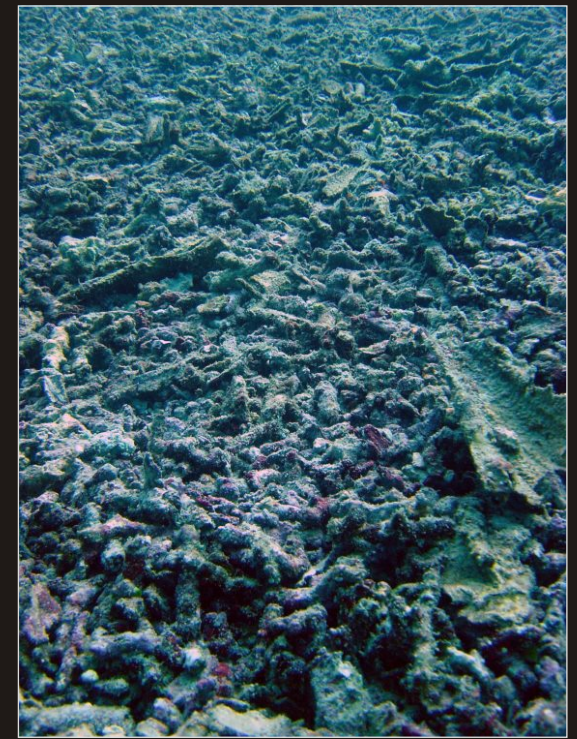


Fig.02

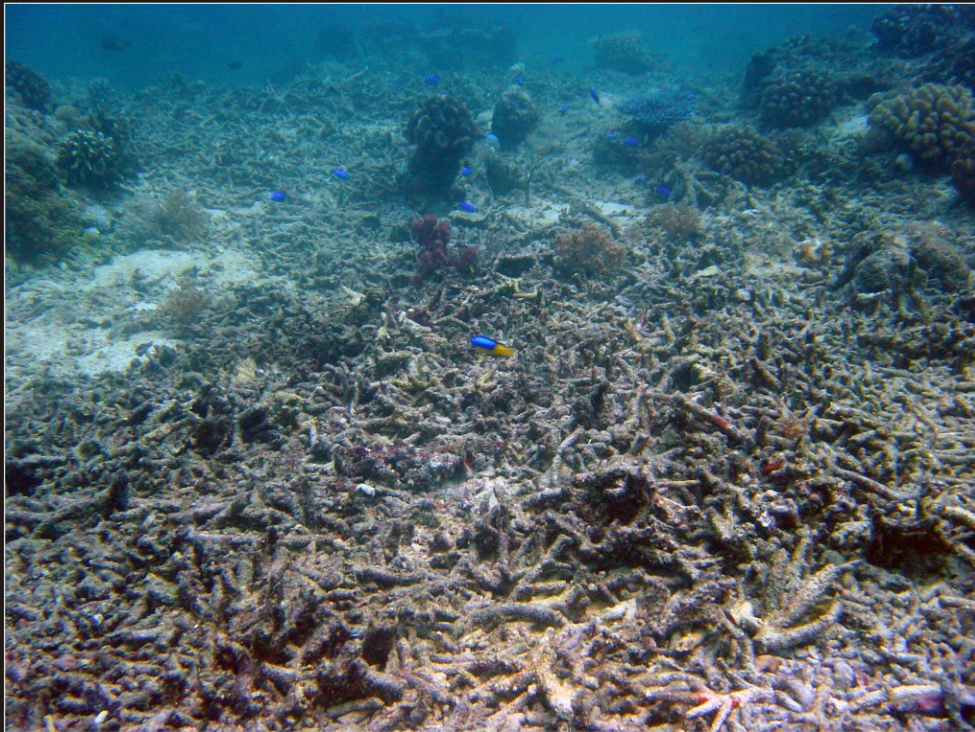


Fig.03

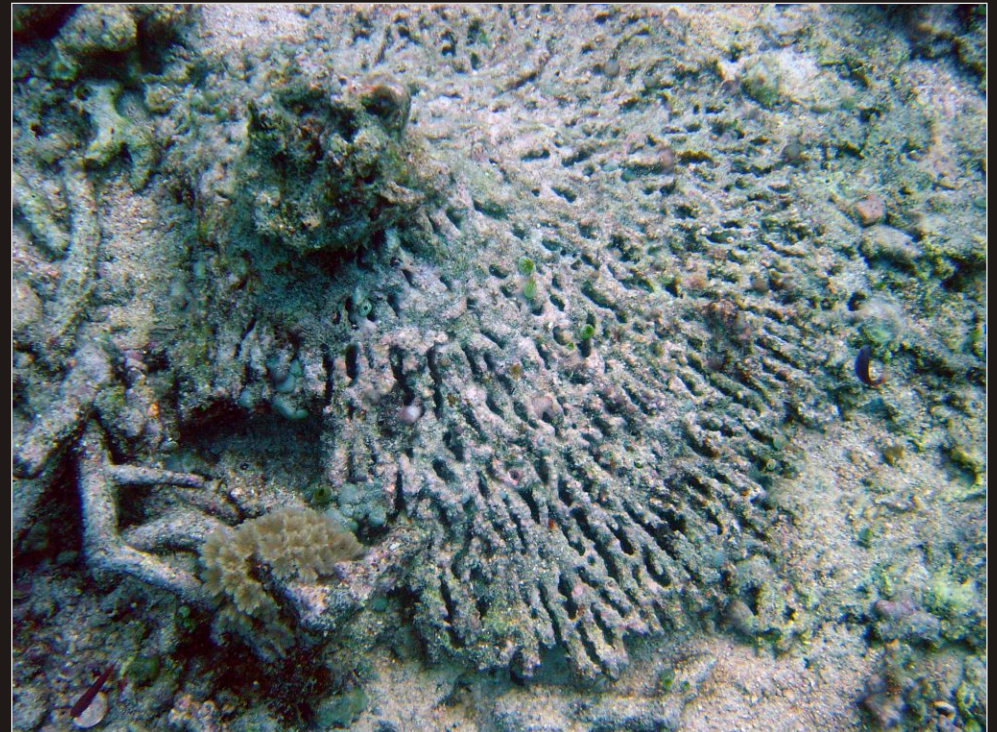


Fig.04









Fig.06

Large numbers of corals can be found loose, often having had their bases undermined by boring worms, clams, and sponges. Many of these corals have been damaged by abrasion or burial, often with significant fractions dead. These damaged fragments almost always soon die as the result of physical injury. If a small fraction of the coral tissue is left alive these living portions proceeded to grow well after the attachment to *Biorock*<sup>®</sup> Reef units.



Fig.07



Fig.08



Fig.09



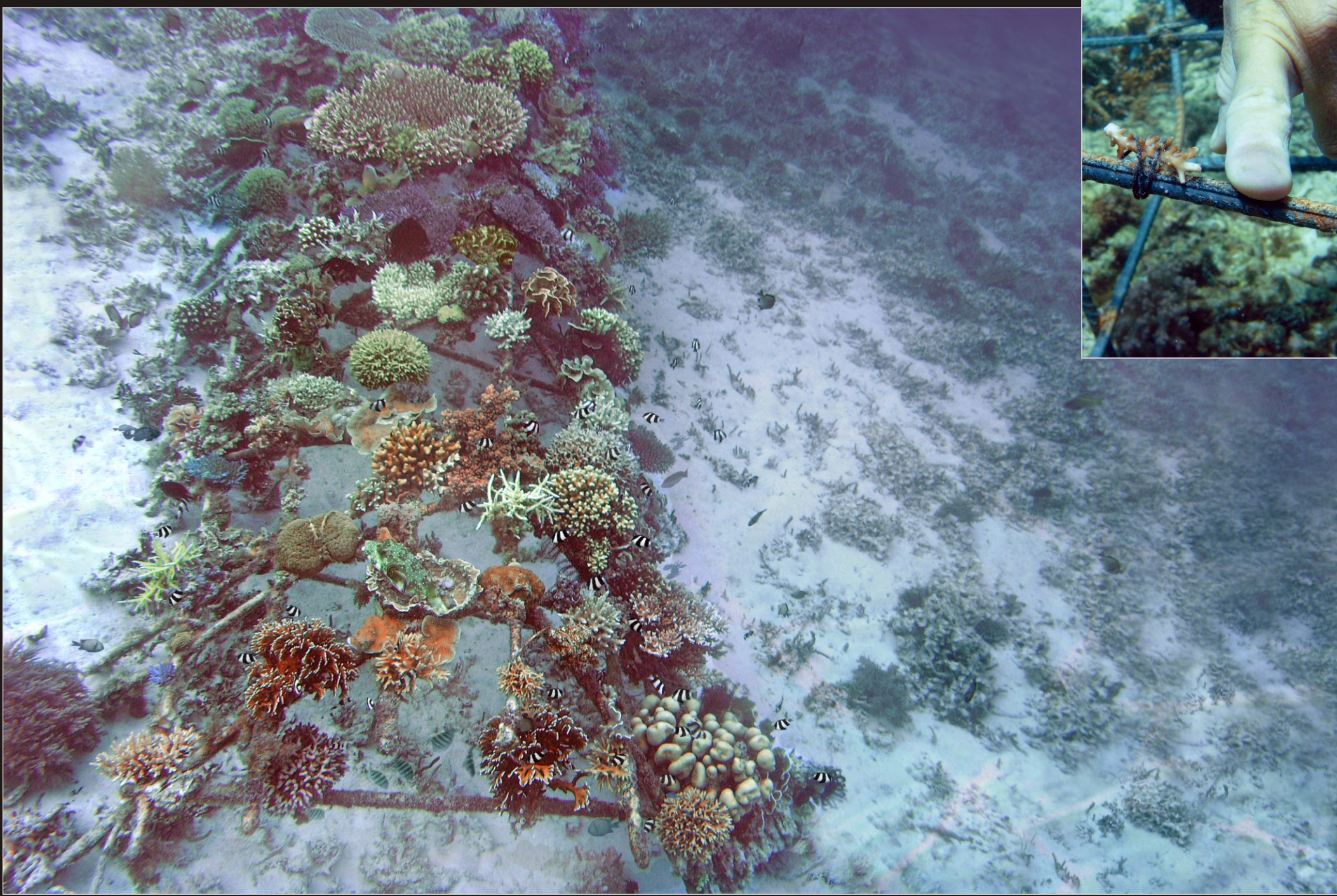


Fig.10



Fig.11



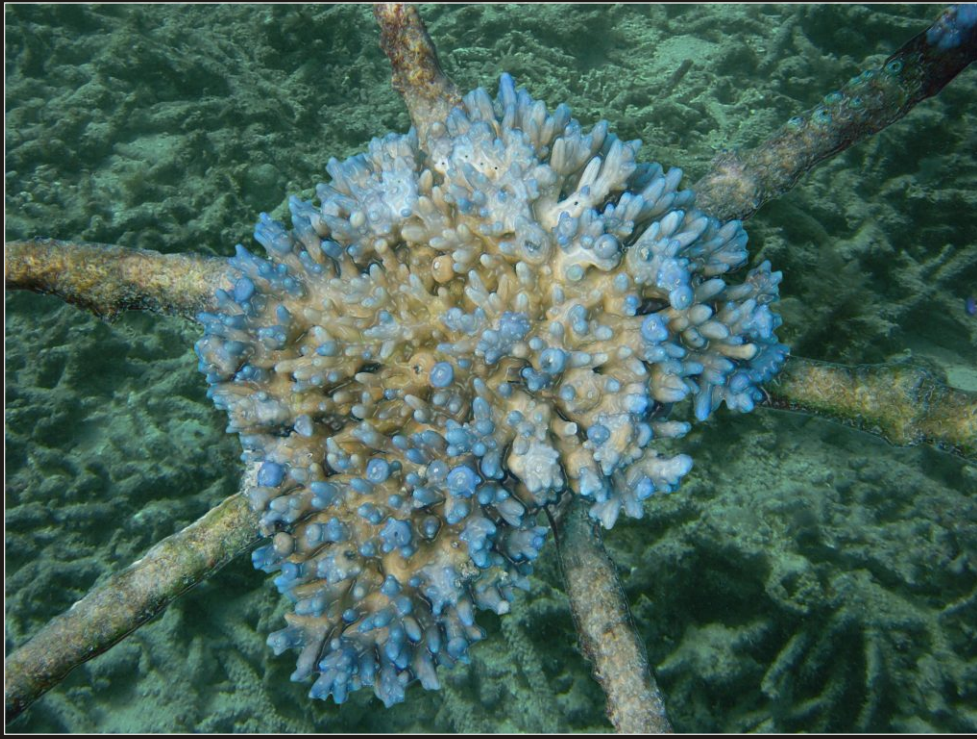


Fig.12



Fig.13



Fig.14



Fig.15